

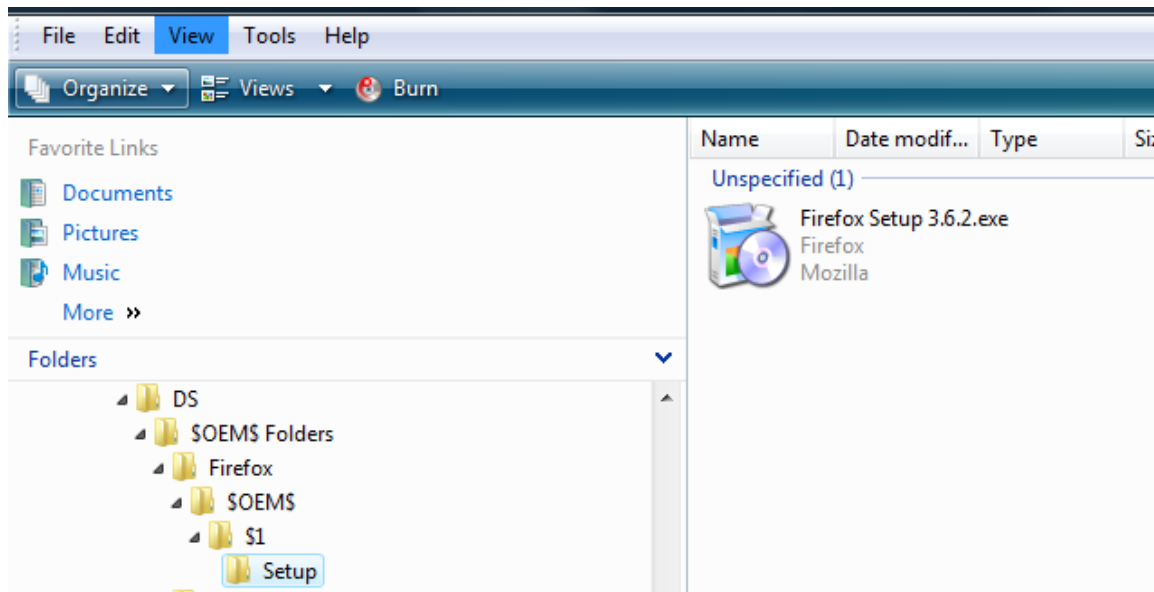
Integrating Firefox® into Windows® Embedded Standard 7

By Sean D. Liming and John R. Malin
SJJ Embedded Micro Solutions

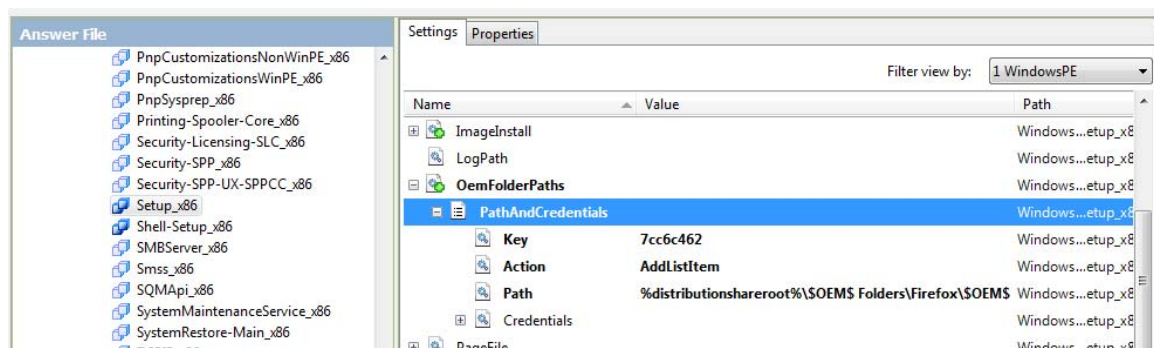
April 2010

The Image Configuration Editor (ICE) not only allows you to add custom files and drivers to the answer file, but you can also execute commands during the installation process.

Firefox is not part of the distribution share, so you will need to download the installer package from www.firefox.com. Place the Firefox installer in a folder under the \$OEM\$ Folders, so that it will install under c:\setup (\$OEM\$ Folders\Firefox\SOEMS\1\Setup).



In ICE, right-click on the Firefox folder and select Insert OEM Folders Path. Firefox is added to the OEMFolderPaths under Foundation Core->windows Embedded Edition->Setup.

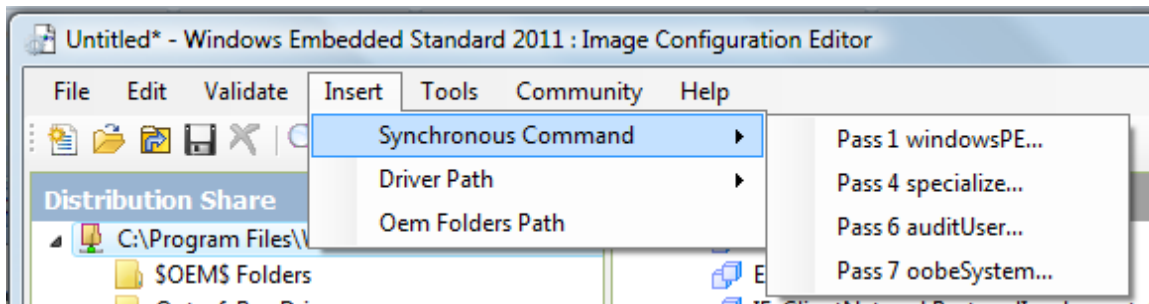


For the installer to run, make sure the Windows Installer package is also part of the answer file.

The Synchronous Command in ICE can be used to silently install Firefox runtime during the installation process. There are a few options for Firefox silent installation. In this example, we will use the “-ms” option to silent install with the default options. A Synchronous Command can be applied to 4 passes. To install Firefox, we will use Pass 7 oobeSystem to run the silent install on the image. We want to install Firefox in the WES7 image not in WinPE. Passes 1 and 4 the

system is still booted into WinPE. Pass 7 is when the system is booted into the WES7 image. Pass 6 is for Sysprep audit mode, which is another option to test software.

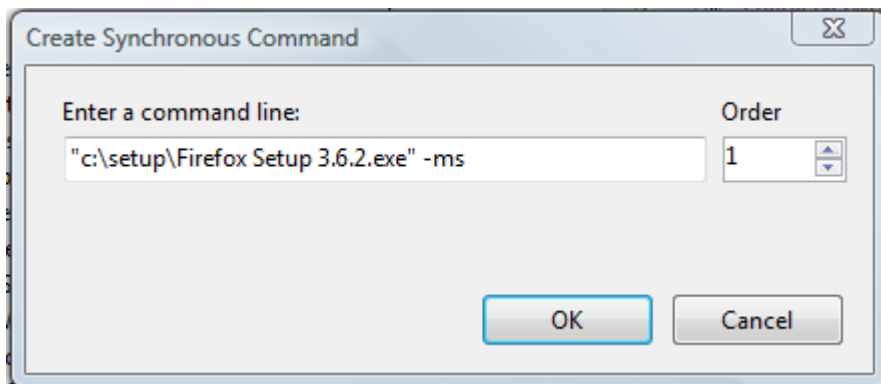
1. From the Insert menu select Synchronous Command-> Pass7 oobeSystem.



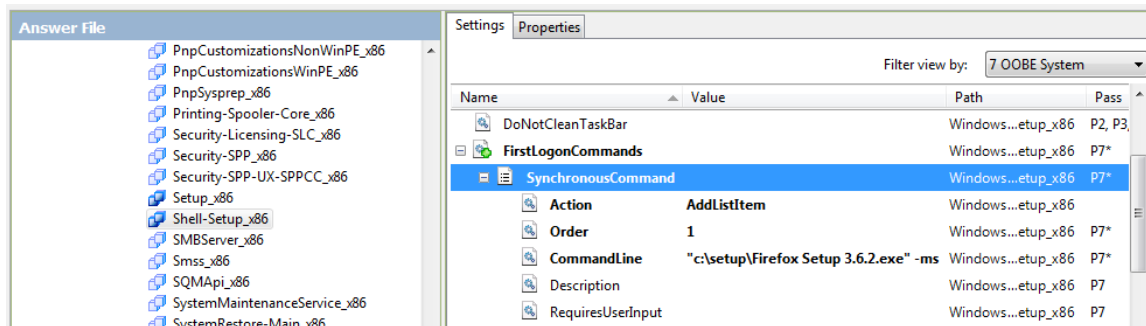
2. Enter the installation command. For our example:

`"c:\setup\Firefox Setup 3.6.2.exe" -ms`

Note: quotes are required around the executable file and path, because of the spaces in the file name.



3. Click OK and the information is stored in the Foundation Core->windows Embedded Edition->Shell Setup.



Once you have completed adding all the features to the answer file, build an IBW disk from the answer file. During the installation, the Firefox installer will be copied to the boot disk, and the silent install command will be executed after the OOB screens run.

Windows is a registered trademark of Microsoft Corporation.