

AMD G Series DB-FT1 Support Package for Windows® Embedded Standard 7

By Sean D. Liming
SJJ Embedded Micro Solutions

May 2012

The AMD G-Series DB-FT1 support package includes 32-bit and 64-bit drivers for the following peripherals:

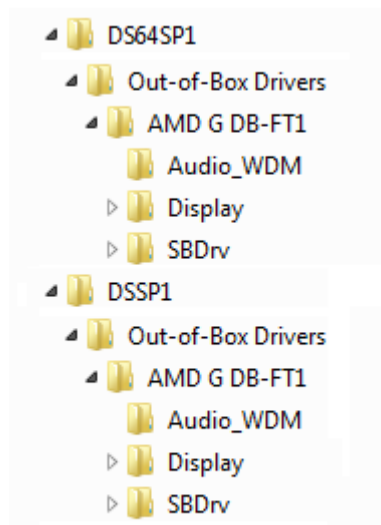
- AMD Video
- Chipset
- AMD HD Audio

A PMQ file is also supplied for the AMD G Series Reference Platform (DB-FT1) to pull in the in-box non-core driver packages.

The package is an example only, and the drivers supplied might not be the latest drivers available. Please see the manufacture for any updates.

The package has been tested with the AMD G T40E and the T56N.

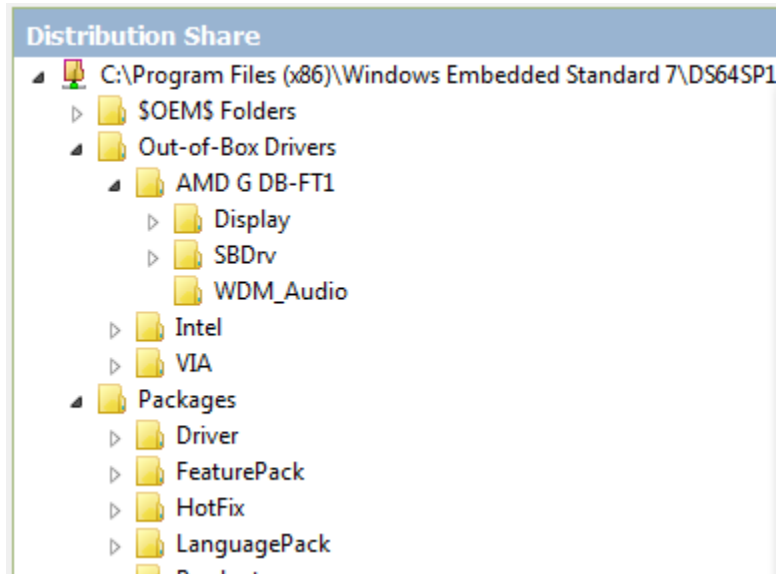
The drivers are place in the out-of-box drivers folder for both 32-bit and 64-bit distribution shares.



Support Package Usage

Basic usage steps:

1. Copy the folders in the out-of-box drivers folder to the corresponding folder of the 32-bit and 64-bit distribution share.
2. Open Image Configuration Editor (ICE).
3. Select **File->Import->Import PMQ...** to import the **AMD_G.pmq** file.
4. Under Out-of-Box Drivers, right-click on **AMD G DB-FT1** and select **Insert Driver Path to Pass 2 offlineServicing**.



5. Make sure the following packages and drivers from the distribution share are in the answer file:
 - Device Framework
 - Device User Experience
 - Composite Bus Enumerator Driver
 - Microsoft UAA Function Driver for High Definition Audio (HDAudio)
6. Add any other packages and drivers to your answer file.
7. Validate the answer file.
8. Build an IBW disk using the answer file.
9. Install the WES7 image on the AMD G-Series Reference Platform (DB-FT1)

Windows is a registered trademark of Microsoft Corporation.