

Intel® D945GCLF2 Support Package for Windows® Embedded Standard 7

By Sean D. Liming
Managing Director
SJJ Embedded Micro Solutions

April 2010

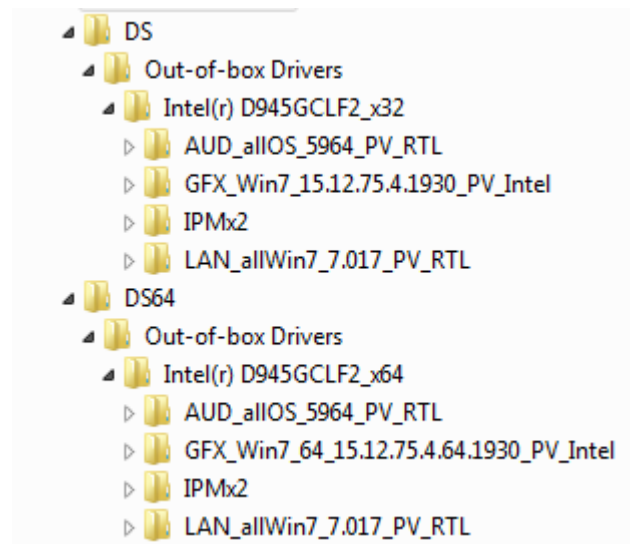
Introduction

The Intel® D945GCLF2 supports Intel® Atom™ 330 processor. The D945GCLF2 support package includes 32-bit and 64-bit drivers for the following peripherals:

- Mobile Intel® 945 Express Chipset Family
- Intel® chipset drivers
- Realtek High Definition Audio
- Realtek PCIe Ethernet

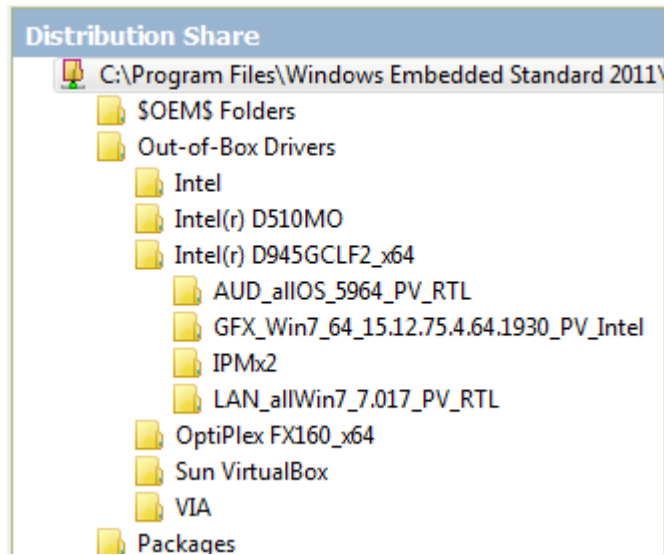
The package is an example only, and the drivers supplied might not be the latest drivers available. Please see the manufacture for any updates.

The drivers are place in the out-of-box drivers folder for both 32-bit and 64-bit distribution shares.



Support Package Usage

1. Copy the folders in the out-of-box drivers folder to the corresponding folder of the 32-bit and 64-bit distribution share.
2. Open Image Configuration Editor (ICE).
3. Create a 32-Bit WinPE disk.
4. Boot the D945GCLF2 to the WinPE disk and run TAP.EXE to capture the hardware information. Booting from USB flash disk is usually the best method.
5. Back in ICE, create a new Answer File.
6. Select **File->Import->Import PMQ...** to import the **devices.pmq** file captured by TAP.EXE.
7. Under Out-of-Box Drivers, right-click on **Intel® D945GCLF2_xXX** and select **Insert Driver Path to Pass 2 offlineServicing**.



8. Make sure to add the following packages and drivers from the distribution share:
 - Device Framework
 - Device User Experience
 - Composite Bus Enumerator Driver
 - Microsoft UAA Function Driver for High Definition Audio (HDAudio)
9. Add any other packages and drivers to your answer file.
10. Validate the answer file.
11. Build an IBW disk using the answer file.
12. Install the WES7 image on the D945GCLF2.

Windows is a registered trademark of Microsoft Corporation.