

Intel® D945GSEJT Support Package for Windows® Embedded Standard 7

By Sean D. Liming
Managing Director
SJJ Embedded Micro Solutions

April 2010

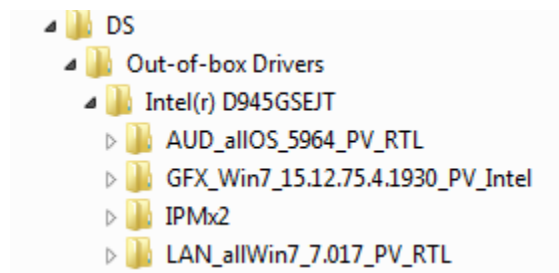
Introduction

The Intel® D945GSEJT supports Intel® Atom™ DN270 processor. The D945GSEJT support package includes 32-bit drivers for the following peripherals:

- Mobile Intel® 945 Express Chipset Family
- Intel® chipset drivers
- Realtek High Definition Audio
- Realtek PCIe Ethernet

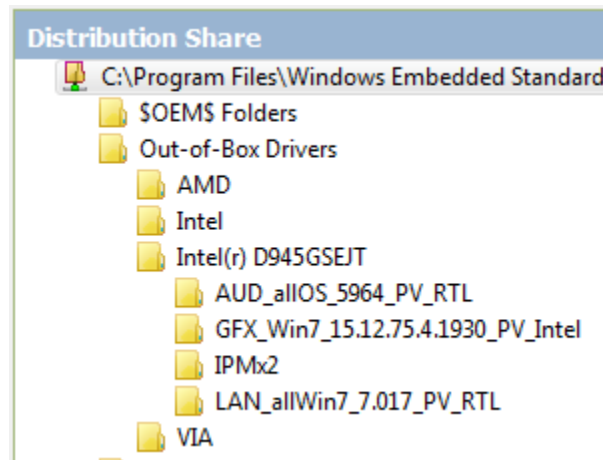
The package is an example only, and the drivers supplied might not be the latest drivers available. Please see the manufacture for any updates.

The drivers are place in the out-of-box drivers folder for the 32-bit distribution share.



Support Package Usage

1. Copy the folders in the out-of-box drivers folder to the 32-bit distribution share.
2. Open Image Configuration Editor (ICE).
3. Create a 32-Bit WinPE disk.
4. Boot the D945GSEJT to the WinPE disk and run TAP.EXE to capture the hardware information. Booting from USB flash disk is usually the best method.
5. Back in ICE, create a new Answer File.
6. Select **File->Import->Import PMQ...** to import the **devices.pmq** file captured by TAP.EXE.
7. Under Out-of-Box Drivers, right-click on **Intel® D945GSEJT** and select **Insert Driver Path to Pass 2 offlineServicing**.



8. Make sure to add the following packages and drivers from the distribution share:
 - Device Framework
 - Device User Experience
 - Composite Bus Enumerator Driver
 - Microsoft UAA Function Driver for High Definition Audio (HDAudio)
9. Add any other packages and drivers to your answer file.
10. Validate the answer file.
11. Build an IBW disk using the answer file.
12. Install the WES7 image on the D945GSEJT.

Windows is a registered trademark of Microsoft Corporation.